



# ST *Fast*

**OVERCOMING LIMITS**



## THE POWER OF ULTRA-FAST COOKING.

The **ST-Fast** ultra-fast cooking oven is a combination of cooking technologies, such as **convection**, **microwave** and **impigement**, which guarantees shorter cooking times than conventional ovens.

Its **design** is modern, avant-garde and innovative and will be the center of attention. It also stands out for its **functionality**, being a compact oven on the outside and spacious on the inside. Its cooking technology will allow you to prepare dishes in a matter of **seconds**. Pizzas in 100 seconds, chicken wraps in 90 seconds or nuggets in 170 seconds.

## OVERCOMING LIMITS



## EXPERIENCE REAL SPEED.

Our ST-Fast is the **ideal** partner for **bars, coffe shops, fast food service, take-away business, ghost kitchens** and **24-hour convenience stores**.

This oven represents a **revolution** in terms of **efficiency, speed** and **cooking quality**, considering its performance. Its technology allows a range actions from **roasting** and **baking** to **toasting** and **reheating**.

## DESIGNED TO...



BARS/COFFE SHOPS



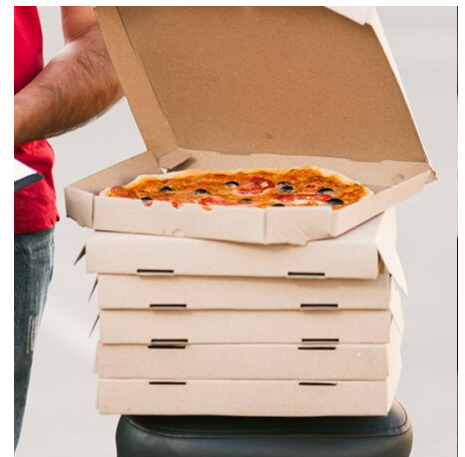
GHOST KITCHEN  
GHOST KITCHENS



FAST FOOD AT HOME



24 HOURS  
CONVENIENCE STORES



# FEATURES

## MAKES THE MOST OF THE SPACE

Compact external dimensions with no loss of cooking chamber space

## LOW NOISE EMISSION

High sound insulation making it the perfect choice for spaces open to the public

## INTUITIVE, CAPACITIVE DISPLAY

Easy to use, guides all processes and displays every data point

## ATTRACTIVE DESIGN

It will attract the attention of all customers

## EASY TO CLEAN

Stainless steel interior, with smooth surface and rounded corners for easy cleaning

## MORE QUALITY IN LESS TIME

Combined cooking technology means higher quality results

## CATALYTIC CONVERTER

Avoids the need for an external ventilation system

## USB CONNECTION

You can download HACCP data and export/import recipes

## HIGH THERMAL INSULATION

Increased safety in the working environment

## CUSTOMISABLE RECIPES

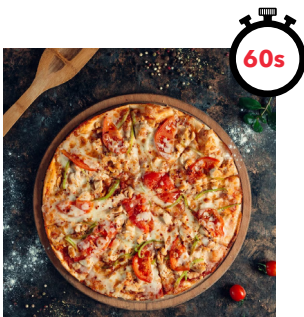
With a storage capacity of up to 300 recipes

## INTEGRATED WIFI CONNECTION

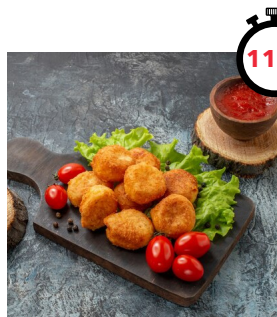
You can manage recipes by the cloud



## FEEL THE EXTREME SPEED



**Fresh pizza**  
1 portion



**Frozen chicken nuggets**  
12 - 14 uds.



**Fresh ham and cheese sandwich**  
1 ud.



**Regenerated fresh sandwich**  
1 ud.

\*The indicated times for these recipes making are indicative and have been carried out in laboratories in which ideal conditions for the cooking processes are maintained.

## THE CENTER OF OPERATIONS: THE TOUCHSCREEN.

It has a **high-resolution** touchscreen that allows you to press, scroll and navigate the interface intuitively, thanks to the large number of icons that simplify the understanding of its operation.

The diagram shows the main touchscreen interface with the following callouts:

- Quick access:** Points to the top row of recipe thumbnails (Receta 01 to Receta 06).
- Recipe classification:** Points to the bottom row of recipe categories: PRIMER PLATO, VERDURA, and CARNE.
- Creations of new recipes:** Points to the '+' icon at the bottom left.
- Quick Start:** Points to the 'Inicio rápido' button.
- Maintenance:** Points to the 'Mantenimiento' button.
- Start the cooking cycle as soon as possible:** Points to the 'Inicio rápido' button.

Text on the right side: "Your oven always ready to prepare any type of recipe." and a 'Maintenance' button.

## CONTROL OF EVERY PARAMETER.

Control every **parameter** of the oven from its intuitive and powerful interface.

The diagram shows the parameter control touchscreen interface with the following callouts:

- Cooking mode Resistande only:** Points to the 'Inicio rápido' button.
- Cooking mode Resistance+ Microwave:** Points to the microwave icon button.
- Temperature selection up to 275 °C.:** Points to the temperature setting '95°'.
- Programming of unlimited time and countdown:** Points to the time setting '01:30'.
- 6 levels of turbine speed.:** Points to the turbine speed setting '3'.
- 10 levels of microwave power.:** Points to the microwave power setting '50%'.

Text on the right side: "Programming of unlimited time and countdown" and a clock icon.

Fast

# CLOUD CONNECTIVITY

General conditions of the machine

Online/Offline

Updates

Statistics

Oven temperature

Active recipe in progress

Send messages (From any device)

Online status of the oven

The messages will be indicated on the screen of the oven

## FULL INTEGRATED CONNECTIVITY



Wifi connection



Control processes from any device



Download software updates, languages, recipes...



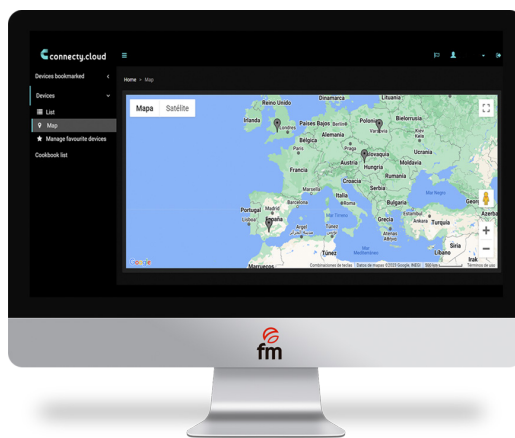
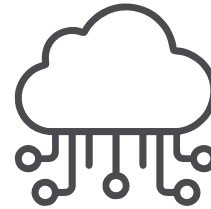
USB input for importing or exporting recipes and downloading data

# CLOUD CONNECTIVITY



## CONNECTY.CLOUD ACCOUNT

You can take advantage of the connecty.cloud subscription completely **free** of charge, without having to pay extra for the service.



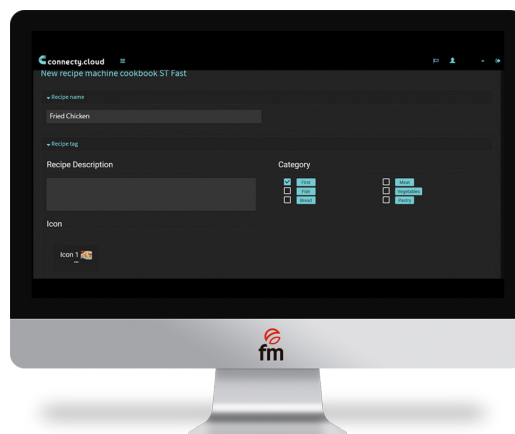
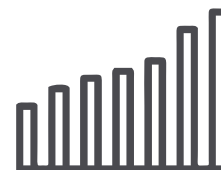
## GEOLOCATION

You will be able to **geolocate** each of the ovens associated with your Connecty.cloud account. You will be able to **access** them through the map and **send messages** and **recipes** or **check the status** of each oven.



## CONTROLLED CONSUMPTION

You will have a **detailed report** of the oven consumption (electricity, water,...).



## CREATE RECIPES

Thanks to the Cloud, you will be able to **create** recipes with the desired configuration, and **unify** them in all the ovens so that the result is always the same in each one of them.



## STF 21 NEW

Ref. 710865

<b>Internal dimensions</b>	(W)320 x (D)310 x (H)190 mm
<b>External dimensions</b>	(W)425 x (D)630 x (H)580 mm
<b>Total power</b>	3.750 W
<b>Convection power</b>	2.200 W
<b>Microwave power</b>	1.000 W
<b>Maximum temperature</b>	275° C
<b>Weight</b>	78 Kg
<b>Voltage</b>	230 V - 50Hz
<b>Connection</b>	Single phase Schuko
<b>Trays capacity</b>	1 x 300x300 (included)
<b>Wifi connection</b>	Standard
<b>Paddle included</b>	Ref. 710746
<b>Teflon tray perforated included</b>	Ref. 710754



## STF 22 NEW

Ref. 710867

<b>Internal dimensions</b>	(W)320 x (D)310 x (H)190 mm	
<b>External dimensions</b>	(W)425 x (D)630 x (H)580 mm	
<b>Total power</b>	6.000 W	
<b>Convection power</b>	2.200 W	
<b>Microwave power</b>	2.000 W	
<b>Maximum temperature</b>	275° C	
<b>Weight</b>	85 Kg	
<b>Voltage</b>	400 V - 50/60 Hz	
<b>Connection</b>	Three phase 3F + N + T	
<b>Trays capacity</b>	1 x 300x300 (included)	
<b>Wifi connection</b>	Standard	
<b>Single phase change (230V)</b>	Optional	Ref.999H01
<b>Paddle included</b>	Ref. 710746	
<b>Teflon tray perforated included</b>	Ref. 710754	





## STF 21 BLACK NEW

Ref. 710866

<b>Internal dimensions</b>	(W)320 x (D)310 x (H)190 mm
<b>External dimensions</b>	(W)425 x (D)630 x (H)580 mm
<b>Total power</b>	3.750 W
<b>Convection power</b>	2.200 W
<b>Microwave power</b>	1.000 W
<b>Maximum temperature</b>	275° C
<b>Weight</b>	78 Kg
<b>Voltage</b>	230 V - 50Hz
<b>Connection</b>	Single phase Schuko
<b>Trays capacity</b>	1 x 300x300 (included)
<b>Wifi connection</b>	Standard
<b>Paddle included</b>	Ref. 710746
<b>Teflon tray perforated included</b>	Ref. 710754



## STF 22 BLACK NEW

Ref. 710868

<b>Internal dimensions</b>	(W)320 x (D)310 x (H)190 mm	
<b>External dimensions</b>	(W)425 x (D)630 x (H)580 mm	
<b>Total power</b>	6.000 W	
<b>Convection power</b>	2.200 W	
<b>Microwave power</b>	2.000 W	
<b>Maximum temperature</b>	275° C	
<b>Weight</b>	85 Kg	
<b>Voltage</b>	400 V - 50/60 Hz	
<b>Connection</b>	Three phase 3F + N + T	
<b>Trays capacity</b>	1 x 300x300 (included)	
<b>Wifi connection</b>	Standard	
<b>Single phase change (230V)</b>	Optional	Ref.999H01
<b>Paddle included</b>	Ref. 710746	
<b>Teflon tray perforated included</b>	Ref. 710754	



## STF 32 NEW

Ref. 710917

<b>Internal dimensions</b>	(W)420 x (D)505 x (H)168 mm
<b>External dimensions</b>	(W)525 x (D)740 x (H)580 mm
<b>Total power</b>	7.000 W
<b>Convection power</b>	3.200 W
<b>Microwave power</b>	2.000 W
<b>Maximum temperature</b>	275° C
<b>Weight</b>	92 Kg
<b>Voltage</b>	400 V - 50/60 Hz
<b>Connection</b>	Three phase 3F + N
<b>Trays capacity</b>	1 x 400x400 (included)
<b>Wifi connection</b>	Standard
<b>Paddle included</b>	Ref. 710944
<b>Teflon tray perforated included</b>	Ref. 710949



## STF 32 BLACK NEW

Ref. 710920

<b>Internal dimensions</b>	(W)420 x (D)505 x (H)168 mm	
<b>External dimensions</b>	(W)525 x (D)740 x (H)580 mm	
<b>Total power</b>	7.000 W	
<b>Convection power</b>	3.200 W	
<b>Microwave power</b>	2.000 W	
<b>Maximum temperature</b>	275° C	
<b>Weight</b>	92 Kg	
<b>Voltage</b>	400 V - 50/60 Hz	
<b>Connection</b>	Three phase 3F + N + T	
<b>Trays capacity</b>	1 x 400x400 (included)	
<b>Wifi connection</b>	Standard	
<b>Single phase change (230V)</b>	Optional	Ref.999H01
<b>Paddle included</b>	Ref. 710944	
<b>Teflon tray perforated included</b>	Ref. 710949	



## STF 41

Ref. 710905

<b>Internal dimensions</b>	(W)480 x (D)405 x (H)305 mm	
<b>External dimensions</b>	(W)590 x (D)750 x (H)675 mm	
<b>Total power</b>	5.600 W	
<b>Convection power</b>	3.500 W	
<b>Microwave power</b>	1.000 W	
<b>Maximum temperature</b>	275° C	
<b>Weight</b>	98 Kg	
<b>Voltage</b>	400 V - 50/60 Hz	
<b>Connection</b>	Three phase 3F + N	
<b>Trays capacity</b>	3 x 430x340 (1 included)	
<b>Distance between trays</b>	80 mm	
<b>Wifi connection</b>	Standard	
<b>Single phase change (230V)</b>	Optional	Ref.999H01
<b>Paddle included</b>	Ref. 710746	













## STF 42

Ref. 710906

<b>Internal dimensions</b>	(W)480 x (D)405 x (H)305 mm	
<b>External dimensions</b>	(W)590 x (D)750 x (H)675 mm	
<b>Total power</b>	7.200 W	
<b>Convection power</b>	3.500 W	
<b>Microwave power</b>	2.000 W	
<b>Maximum temperature</b>	275° C	
<b>Weight</b>	110 Kg	
<b>Voltage</b>	400 V - 50/60 Hz	
<b>Connection</b>	Three phase 3F + N + T	
<b>Trays capacity</b>	3 x 430x340 (1 included)	
<b>Distance between trays</b>	80 mm	
<b>Wifi connection</b>	Standard	
<b>Single phase change (230V)</b>	Optional	Ref.999H01
<b>Paddle included</b>	Ref. 710746	



# FAST RECIPES

		ST F21	ST F22	ST F32	ST F41	ST F42
<b>Frozen french fries</b>		500g 210s	500g 180s	500g 240s	500g 290s	500g 260s
<b>Fresh bacon</b>		10-12 units 145s	10-12 units 100s	16-18 units 125s	20-22 units 225s	20-22 units 180s
<b>Fresh pizza</b>		1 portion 100s	1 portion 60s	1 unit 125s	1 unit. 170s	1 unit 140s
<b>Frozen chicken nuggets</b>		12/14 units 170s	12/14 units 110s	16/18 units. 150s	18/20 units 230s	18/20 units 190s
<b>Fresh ham and cheese sandwich</b>		1 unit. 70s	1 unit 55s	4 units 80s	4 units 80s	4 units 65s
<b>Fresh chicken wrap</b>		1 unit 90s	1 unit 75s	4 units 90s	4 units 190s	4 units 160s
<b>Regenerated fresh sandwich</b>		1 unit 50s	1 unit 40s	3 units 100s	3 units 190s	3 units 160s
<b>Regenerated fresh croissant</b>		1 unit 70 s	1 unit 50s	4 units 60s	4 units 190s	4 units 160s
<b>Regenerated fresh chocolate croissant</b>		1 unit 60s	1 unit 45s	4 units 60s	4 units 180s	4 units 150s
<b>Fresh salmon</b>		1 unit (180g) 110s	1 unit (180g) 75s	4 units (180g) 120s	4 units(180g) 190s	4 units (180g) 160s

\*The indicated times for these recipes making are indicative and have been carried out in laboratories in which ideal conditions for these cooking processes are maintained

\*The indicate times for the ST-F41 / 42 oven models have been estimated taking into account the execution of a cooking cycle in combined mode (heating elements + microwave) and using only one tray.

# ACCESORIES FAST

## STANDS



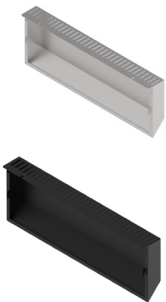
	REFERENCE	DIMENSIONS	COMPATIBILITY
<b>ST-F 21/22</b>	710747	(W)430 x (D)625 x (H)950 mm	21/ 21 BLACK 22 / 22 BLACK
<b>ST-F 32</b>	710927	(W)525 x (D)700 x (H)950 mm	32 / 32 BLACK
<b>ST-F 41/42</b>	710748	(W)595 x (D)715 x (H)950 mm	41 / 42

## TOP ACCESSORY



	REFERENCE	DIMENSIONS	COMPATIBILITY
<b>ST-F 21/22</b>	710931	(W)430 x (D)520 x (H)55 mm	21/ 21 BLACK 22 / 22 BLACK
<b>ST-F 21/22 BLACK</b>	710932	(W)430 x (D)520 x (H)55 mm	21/ 21 BLACK 22 / 22 BLACK
<b>ST-F 32</b>	710933	(W)530 x (D)635 x (H)55 mm	32 / 32 BLACK
<b>ST-F 32 BLACK</b>	710941	(W)530 x (D)635 x (H)55 mm	32 / 32 BLACK

## VENTILATION DUCT



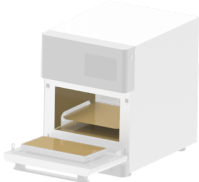
	REFERENCE	DIMENSIONS	COMPATIBILITY
<b>ST-F 21/22</b>	710934	(W)425 x (D)40x (H)150 mm	21/ 21 BLACK 22 / 22 BLACK
<b>ST-F 21/22 BLACK</b>	710935	(W)425 x (D)40x (H)150 mm	21 / 21 BLACK 22 / 22 BLACK
<b>ST-F 32</b>	710936	(W)525 x (D)40x (H)150 mm	32 / 32 BLACK
<b>ST-F 32 BLACK</b>	710937	(W)525 x (D)40x (H)150 mm	32 / 32 BLACK

## PADDLES



	REFERENCE	DIMENSIONS
<b>PADDLE ST-F 21/22</b>	710746	300 x 300 mm
<b>PADDLE ST-F 32</b>	710944	380 X 380 mm

## ADHESIVE TEFLONS



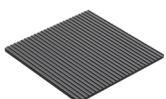
	REFERENCE	DIMENSIONS
<b>ST-F 21/22</b>	710886	21/ 21 BLACK 22 / 22 BLACK
<b>ST-F 32</b>	710942	32 / 32 BLACK

## PINCH



	REFERENCE
<b>PINCH</b>	710878

## TRAYS



FAST TRAYS	STARTER KIT FAST
------------	------------------

Pages 14-15

Page 16

## INOX TRAY



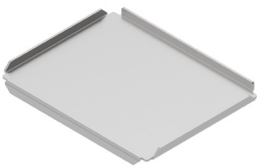
## REFERENCE

710749

## DIMENSIONS

300X300

## INOX PLAIN TRAY



## REFERENCE

710750

## DIMENSIONS

430X340

## TEFLON TRAY PERFORATED BOTTOM




## REFERENCE

710754

## DIMENSIONS

270X270

710949 

380X380

## TEFLON TRAY PLAIN BOTTOM




## REFERENCE

710755

## DIMENSIONS

270X270

710950 

380X380

## TEFLON TRAY REINFORCED PERFORATED



## REFERENCE

710945

## DIMENSIONS

270X270

710947

380X380

## TEFLON TRAY REINFORCED PLAIN



## REFERENCE

710946

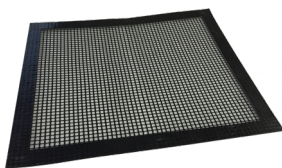
## DIMENSIONS

270X270

710948

380X380

## TEFLON PERFORATED LINING



## REFERENCE

710751

## DIMENSIONS

400X300

## TEFLON PLAIN LINING



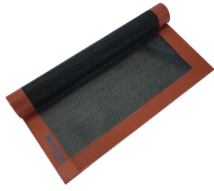
## REFERENCE

710752

## DIMENSIONS

400X300

## PERFORATED SILICONE LINER



### REFERENCE

710753

### DIMENSIONS

400X300

## NON-STICK ALUMINIUM PADDLE NEW



### REFERENCE

710885

### DIMENSIONS

425x295

## NON-STICK ROASTING AND BAKING PAN

Ø 19CM. NEW



### REFERENCE

710881

### DIMENSIONS

190X190

## NON-STICK ALUMINIUM PAN SQUARE PLAIN

D 3MM. NEW



### REFERENCE

710879

### DIMENSIONS

260X260

## NON-STICK ALUMINIUM PAN SQUARE

GRATED D 3MM. NEW



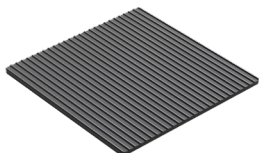
### REFERENCE

710880

### DIMENSIONS

260X260

## NON-STICK ALUMINIUM TRAY NEW



### REFERENCE

710884

### DIMENSIONS

310X295

## 5 EGGS TRAY NEW



### REFERENCE

710882

### DIMENSIONS

280X290

## NON-STICK ALUMINIUM BOWL D 5MM. NEW



### REFERENCE

710883

### DIMENSIONS

240X150

## STARTER KIT FAST

Ref. 710874

**PINCH**  
Ref. 710878

**NON-STICK  
ALUMINIUM TRAY**  
Ref. 710884



**NON-STICK ALUMINIUM  
BOWL D 5 MM**  
Ref. 710883

**TEFLON TRAY PLAIN  
BOTTOM**  
Ref. 710755

### STARTER KIT ITEMS

### REFERENCES

PINCH

710878

TEFLON TRAY PLAIN BOTTOM

710755

NON-STICK ALUMINIUM BOWL D 5 MM

710883

NON-STICK ALUMINIUM TRAY

710884







fm

STEAST



USB



Ctra. de Rute km. 2'700  
14900 LUCENA (Córdoba)  
SPAIN

Tel: (0034) 957 501 101

[www.fmindustrial.es](http://www.fmindustrial.es)

*Síguenos en redes sociales*

 @hornosfm.industrial

 @fm\_industrial\_

 FM Industrial

 @fm\_industrial

 @fm\_industrial